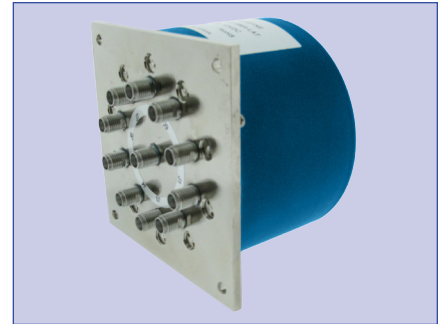




| PART NUMBER | DESCRIPTION |
|---|---|
| CCT-59S | Commercial Latching Multi-throw, DC-12GHz |
| <p>The CCT-59S is a broadband, multi-throw, electromechanical coaxial switch designed to switch a microwave signal from a common input to any of 9 or 10 outputs. The characteristic impedance is 50 Ohms. Each position has an individual actuator mechanism allowing random position selection. This also minimizes switching time.</p> <p>The CCT-59S comes with a latching actuator. The latching switch remains in the last position selected when the switch is de-energized. STD dual command requires a reset pulse before a new selected position. A separate reset circuit allows all positions to be set to an open position. User must provide both reset (clear) and set (select new position) commands.</p> | |



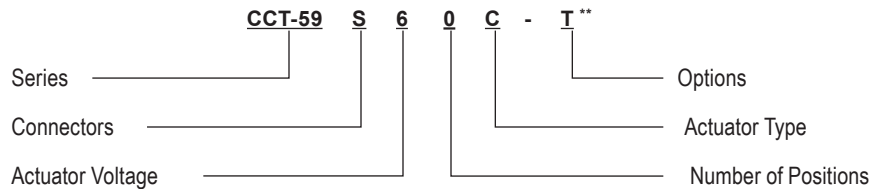
| ENVIRONMENTAL AND PHYSICAL CHARACTERISTICS | |
|---|-----------------------|
| Operating Temperature Commercial Model, CCT-59S | -25°C to 65°C |
| Vibration (MIL-STD-202 Method 214, Condition D, non-operating) | 10 g's RMS |
| Shock (MIL-STD-202 Method 213, Condition D, non-operating) | 500 g's |
| Standard Actuator Life | 3,000,000 cycles |
| Actuator Life w/ Additional Features | 1,000,000 cycles |
| Connector Type | SMA |
| Humidity (Moisture Seal) | Available |
| Weight | 9 oz. (255.2g) (max.) |

| ELECTRICAL CHARACTERISTICS | |
|--------------------------------|-----------------------------------|
| Form Factor | Multi-Throw, break before make |
| Frequency Range CCT-59S | DC-12 GHz |
| Characteristic Impedance | 50 Ohms |
| Operate Time | 20 ms (max.) |
| Actuation Voltage Available | 12 15 24 28 V |
| Actuation Current | 110 105 90 105 mA |
| Reset Current (# of Positions) | |
| (9) | 990 945 810 945 mA |
| (10) | 1100 1050 900 1050 mA |

| TYPICAL PERFORMANCE CHARACTERISTICS | | | |
|-------------------------------------|----------|----------|-----------|
| Frequency | DC-6 GHz | 6-12 GHz | 12-18 GHz |
| Insertion Loss, dB, max. | 0.20 | 0.40 | 0.50 |
| Isolation, dB, min. | 70 | 60 | 60 |
| VSWR, max. | 1.30:1 | 1.40:1 | 1.60:1 |

For maximum limits, please see charts on pages 7

PART NUMBERING SYSTEM



| CONNECTOR | ACTUATOR VOLTAGE | NUMBER OF POSITIONS | ACTUATOR TYPE | OPTIONS |
|---------------|--------------------|---------------------|----------------------------------|--|
| S: SMA FEMALE | 6: 28 VDC LATCHING | 9: SP9T | 0: NO INDICATOR CONTACTS | T: TTL DRIVERS WITH DIODES |
| | 7: 15 VDC LATCHING | 0: SP10T | C: INDICATOR CONTACTS*** | D: COIL TRANSIENT SUPPRESSION DIODES |
| | 8: 12 VDC LATCHING | | D: SELF CUTOFF ONLY | R: POSITIVE + COMMON |
| | 9: 24 VDC LATCHING | | E: INDICATORS AND SELF CUTOFF*** | TD: DECODERS AND TTL DRIVERS WITH DIODES |
| | | | | M: MOISTURE SEAL |
| | | | | S: D-SUB CONNECTOR* |

**SEE PART NUMBER ON PAGE 10

***Indicator Contacts Operating Temperature
-50°C to 85°C (Elite Model Only)

* D-Sub Connector may be 15 or 26 pin depending on number of throws. (See Connector Pinout page)

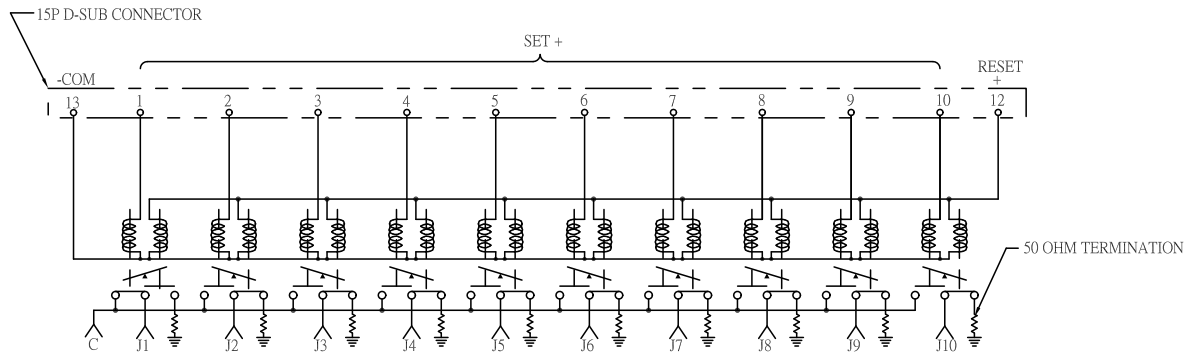
** D-Sub Connectors is standard configuration on all models unless otherwise specified

For additional options, please contact factory.

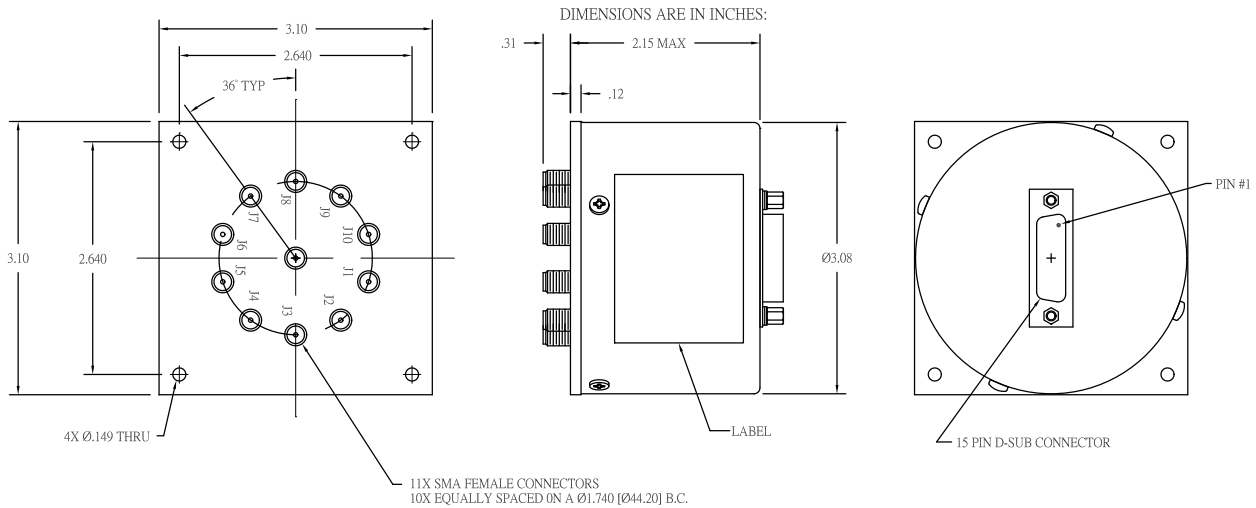
Series CCT-59S
Multi-Throw DC-18 GHz, SP9T & SP10T
Latching Coaxial Switch, Internal 50Ω Termination



SCHEMATICS AND MECHANICAL OUTLINE

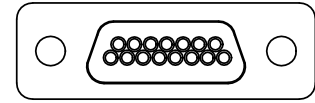


SCHEMATIC
 COIL 1 SHOWN LAST ENERGIZE

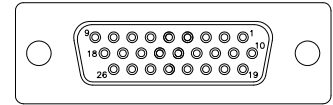


“-S OPTION” 15-PIN D-SUB OR 26-PIN D-MICRO CONNECTOR (EXAMPLE: [CCT-59s690-s](#))

| CONNECTOR PINOUT FOR LATCHING SP9T MULTI-THROW SWITCHES | | | | | | |
|---|--------------|-------------------|---------------|-------------------|----------------|-------------------|
| EXAMPLE | CCT-59S690-S | CCT-59S69C-S | CCT-59S690-TS | CCT-59S69C-TS | CCT-59S690-TDS | CCT-59S69C-TDS |
| INDICATOR | | Yes | | Yes | | Yes |
| TTL | | | Yes | Yes | | |
| DECODERS & TTL | | | | | Yes | Yes |
| PIN NO. | 15-PIN | 26-PIN | 15-PIN | 26-PIN | 15-PIN | 26-PIN |
| 1 | PORT 1 | PORT 1 | TTL 1 | TTL 1 | LOGIC 1 | LOGIC 1 |
| 2 | PORT 2 | PORT 2 | TTL 2 | TTL 2 | LOGIC 2 | LOGIC 2 |
| 3 | PORT 3 | PORT 3 | TTL 3 | TTL 3 | LOGIC 3 | LOGIC 3 |
| 4 | PORT 4 | PORT 4 | TTL 4 | TTL 4 | LOGIC 4 | LOGIC 4 |
| 5 | PORT 5 | PORT 5 | TTL 5 | TTL 5 | | |
| 6 | PORT 6 | PORT 6 | TTL 6 | TTL 6 | | |
| 7 | PORT 7 | PORT 7 | TTL 7 | TTL 7 | | |
| 8 | PORT 8 | PORT 8 | TTL 8 | TTL 8 | | |
| 9 | PORT 9 | PORT 9 | TTL 9 | TTL 9 | | |
| 10 | | | | | | |
| 11 | | | Vsw | Vsw | Vsw | Vsw |
| 12 | Reset | Reset | Reset | Reset | | |
| 13 | COMMON | COMMON | COMMON | COMMON | COMMON | COMMON |
| 14 | | | | | | |
| 15 | | D Indicator (COM) | | D Indicator (COM) | | D Indicator (COM) |
| 16 | | E Indicator | | E Indicator | | E Indicator |
| 17 | | F Indicator | | F Indicator | | F Indicator |
| 18 | | G Indicator | | G Indicator | | G Indicator |
| 19 | | H Indicator | | H Indicator | | H Indicator |
| 20 | | K Indicator | | K Indicator | | K Indicator |
| 21 | | L Indicator | | L Indicator | | L Indicator |
| 22 | | M Indicator | | M Indicator | | M Indicator |
| 23 | | N Indicator | | N Indicator | | N Indicator |
| 24 | | P Indicator | | P Indicator | | P Indicator |
| 25 | | | | | | |



15-PIN D-SUB CONNECTOR



26-PIN D-SUB CONNECTOR

Series CCT-59S
Multi-Throw DC-18 GHz, SP9T & SP10T
Latching Coaxial Switch, Internal 50Ω Termination



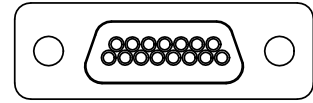
SP9T TRUTH TABLE Latching
CCT-59SX9C-T

| Logic Input | | | | | | | | | | | RF Path | | | | | | | | | | Indicator Switches | | | | | | | | | |
|-------------|---|---|---|---|---|---|---|---|---|-----|---------|-----|-----|-----|-----|-----|-----|-----|-------|---|--------------------|---|---|---|---|---|---|---|--|--|
| 1 | 2 | 3 | 4 | 5 | 6 | 7 | 8 | 9 | R | J1 | J2 | J3 | J4 | J5 | J6 | J7 | J8 | J9 | Reset | E | F | G | H | K | L | M | N | O | | |
| 1 | 0 | 0 | 0 | 0 | 0 | 0 | 0 | 0 | 0 | On | Off | Off | Off | Off | Off | Off | Off | Off | Off | C | 0 | 0 | 0 | 0 | 0 | 0 | 0 | 0 | | |
| 0 | 1 | 0 | 0 | 0 | 0 | 0 | 0 | 0 | 0 | Off | On | Off | Off | Off | Off | Off | Off | Off | Off | 0 | C | 0 | 0 | 0 | 0 | 0 | 0 | 0 | | |
| 0 | 0 | 1 | 0 | 0 | 0 | 0 | 0 | 0 | 0 | Off | Off | On | Off | Off | Off | Off | Off | Off | Off | 0 | 0 | C | 0 | 0 | 0 | 0 | 0 | 0 | | |
| 0 | 0 | 0 | 1 | 0 | 0 | 0 | 0 | 0 | 0 | Off | Off | Off | On | Off | Off | Off | Off | Off | Off | 0 | 0 | 0 | C | 0 | 0 | 0 | 0 | 0 | | |
| 0 | 0 | 0 | 0 | 1 | 0 | 0 | 0 | 0 | 0 | Off | Off | Off | Off | On | Off | Off | Off | Off | Off | 0 | 0 | 0 | 0 | C | 0 | 0 | 0 | 0 | | |
| 0 | 0 | 0 | 0 | 0 | 1 | 0 | 0 | 0 | 0 | Off | Off | Off | Off | Off | On | Off | Off | Off | Off | 0 | 0 | 0 | 0 | 0 | C | 0 | 0 | 0 | | |
| 0 | 0 | 0 | 0 | 0 | 0 | 1 | 0 | 0 | 0 | Off | Off | Off | Off | Off | Off | On | Off | Off | Off | 0 | 0 | 0 | 0 | 0 | 0 | C | 0 | 0 | | |
| 0 | 0 | 0 | 0 | 0 | 0 | 0 | 1 | 0 | 0 | Off | Off | Off | Off | Off | Off | Off | On | Off | Off | 0 | 0 | 0 | 0 | 0 | 0 | 0 | C | 0 | | |
| 0 | 0 | 0 | 0 | 0 | 0 | 0 | 0 | 1 | 0 | Off | Off | Off | Off | Off | Off | Off | Off | On | Off | 0 | 0 | 0 | 0 | 0 | 0 | 0 | 0 | C | | |
| 0 | 0 | 0 | 0 | 0 | 0 | 0 | 0 | 0 | 1 | Off | Off | Off | Off | Off | Off | Off | Off | Off | On | 0 | 0 | 0 | 0 | 0 | 0 | 0 | 0 | C | | |

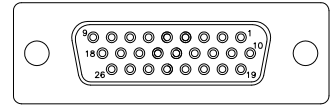
TRUTH TABLE Latching
CCT-59SX9C-TD

| Logic Input | | | | RF Path | | | | | | | | | | Indicator Switches | | | | | | | | | | | | | | | |
|-------------|---|---|---|----------|-----|-----|-----|-----|-----|-----|-----|-----|-------|--------------------|---|---|---|---|---|---|---|---|---|---|---|---|---|---|---|
| 1 | 2 | 3 | 4 | J1 | J2 | J3 | J4 | J5 | J6 | J7 | J8 | J9 | Reset | E | F | G | H | K | L | M | N | O | | | | | | | |
| 0 | 0 | 0 | 0 | On | Off | Off | Off | Off | Off | Off | Off | Off | Off | C | 0 | 0 | 0 | 0 | 0 | 0 | 0 | 0 | 0 | 0 | 0 | 0 | 0 | | |
| 1 | 0 | 0 | 0 | Off | On | Off | Off | Off | Off | Off | Off | Off | Off | 0 | C | 0 | 0 | 0 | 0 | 0 | 0 | 0 | 0 | 0 | 0 | 0 | 0 | | |
| 0 | 1 | 0 | 0 | Off | Off | On | Off | Off | Off | Off | Off | Off | Off | 0 | 0 | C | 0 | 0 | 0 | 0 | 0 | 0 | 0 | 0 | 0 | 0 | 0 | | |
| 1 | 1 | 0 | 0 | Off | Off | Off | On | Off | Off | Off | Off | Off | Off | 0 | 0 | 0 | C | 0 | 0 | 0 | 0 | 0 | 0 | 0 | 0 | 0 | 0 | | |
| 0 | 0 | 1 | 0 | Off | Off | Off | Off | On | Off | Off | Off | Off | Off | 0 | 0 | 0 | 0 | C | 0 | 0 | 0 | 0 | 0 | 0 | 0 | 0 | 0 | | |
| 1 | 0 | 1 | 0 | Off | Off | Off | Off | Off | On | Off | Off | Off | Off | 0 | 0 | 0 | 0 | 0 | C | 0 | 0 | 0 | 0 | 0 | 0 | 0 | 0 | | |
| 0 | 1 | 1 | 0 | Off | Off | Off | Off | Off | Off | On | Off | Off | Off | 0 | 0 | 0 | 0 | 0 | 0 | C | 0 | 0 | 0 | 0 | 0 | 0 | 0 | | |
| 1 | 1 | 1 | 0 | Off | Off | Off | Off | Off | Off | Off | On | Off | Off | 0 | 0 | 0 | 0 | 0 | 0 | 0 | C | 0 | 0 | 0 | 0 | 0 | 0 | | |
| 0 | 0 | 0 | 1 | Off | Off | Off | Off | Off | Off | Off | Off | On | Off | 0 | 0 | 0 | 0 | 0 | 0 | 0 | 0 | C | 0 | 0 | 0 | 0 | 0 | | |
| 1 | 0 | 0 | 1 | Off | Off | Off | Off | Off | Off | Off | Off | Off | Reset | 0 | 0 | 0 | 0 | 0 | 0 | 0 | 0 | 0 | 0 | 0 | 0 | 0 | 0 | | |
| 1 | 1 | 1 | 1 | COIL OFF | | | | | | | | | | 0 | 0 | 0 | 0 | 0 | 0 | 0 | 0 | 0 | 0 | 0 | 0 | 0 | 0 | 0 | 0 |

| CONNECTOR PINOUT FOR LATCHING SP10T MULTI-THROW SWITCHES | | | | | | |
|--|--------------|-------------------|---------------|-------------------|----------------|-------------------|
| EXAMPLE | CCT-59S600-S | CCT-59S60C-S | CCT-59S600-TS | CCT-59S60C-TS | CCT-59S600-TDS | CCT-59S60C-TDS |
| INDICATOR | | Yes | | Yes | | Yes |
| TTL | | | Yes | Yes | | |
| DECODERS & TTL | | | | | Yes | Yes |
| PIN NO. | 15-PIN | 26-PIN | 15-PIN | 26-PIN | 15-PIN | 26-PIN |
| 1 | PORT 1 | PORT 1 | TTL 1 | TTL 1 | LOGIC 1 | LOGIC 1 |
| 2 | PORT 2 | PORT 2 | TTL 2 | TTL 2 | LOGIC 2 | LOGIC 2 |
| 3 | PORT 3 | PORT 3 | TTL 3 | TTL 3 | LOGIC 3 | LOGIC 3 |
| 4 | PORT 4 | PORT 4 | TTL 4 | TTL 4 | LOGIC 4 | LOGIC 4 |
| 5 | PORT 5 | PORT 5 | TTL 5 | TTL 5 | | |
| 6 | PORT 6 | PORT 6 | TTL 6 | TTL 6 | | |
| 7 | PORT 7 | PORT 7 | TTL 7 | TTL 7 | | |
| 8 | PORT 8 | PORT 8 | TTL 8 | TTL 8 | | |
| 9 | PORT 9 | PORT 9 | TTL 9 | TTL 9 | | |
| 10 | PORT 10 | PORT 10 | TTL 10 | TTL 10 | | |
| 11 | | | Vsw | Vsw | Vsw | Vsw |
| 12 | Reset | Reset | Reset | Reset | | |
| 13 | COMMON | COMMON | COMMON | COMMON | COMMON | COMMON |
| 14 | | | | | | |
| 15 | | D Indicator (COM) | | D Indicator (COM) | | D Indicator (COM) |
| 16 | | E Indicator | | E Indicator | | E Indicator |
| 17 | | F Indicator | | F Indicator | | F Indicator |
| 18 | | G Indicator | | G Indicator | | G Indicator |
| 19 | | H Indicator | | H Indicator | | H Indicator |
| 20 | | K Indicator | | K Indicator | | K Indicator |
| 21 | | L Indicator | | L Indicator | | L Indicator |
| 22 | | M Indicator | | M Indicator | | M Indicator |
| 23 | | N Indicator | | N Indicator | | N Indicator |
| 24 | | P Indicator | | P Indicator | | P Indicator |
| 25 | | T Indicator | | T Indicator | | T Indicator |
| 26 | | | | | | |



15-PIN D-SUB CONNECTOR



26-PIN D-SUB CONNECTOR

Series CCT-59S
Multi-Throw DC-18 GHz, SP9T & SP10T
Latching Coaxial Switch, Internal 50Ω Termination



SP10T TRUTH TABLE Latching
CCT-59SX0C-T

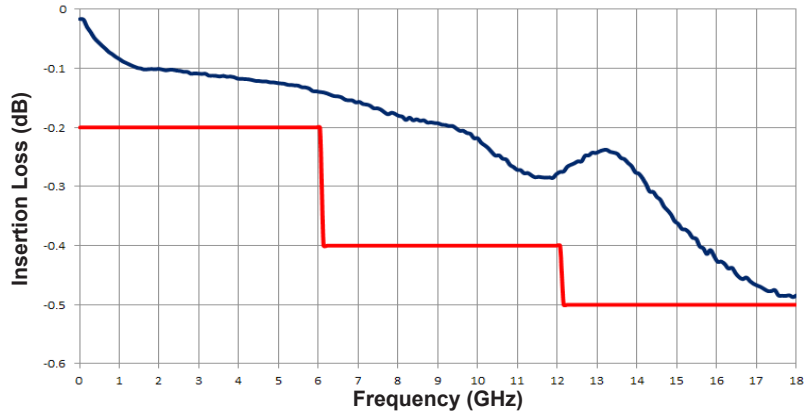
| Logic Input | | | | | | | | | | | RF Path | | | | | | | | | | | Indicator Switches | | | | | | | | | | |
|-------------|---|---|---|---|---|---|---|---|----|---|---------|-----|-----|-----|-----|-----|-----|-----|-----|-----|-------|--------------------|---|---|---|---|---|---|---|---|---|---|
| 1 | 2 | 3 | 4 | 5 | 6 | 7 | 8 | 9 | 10 | R | J1 | J2 | J3 | J4 | J5 | J6 | J7 | J8 | J9 | J10 | Reset | E | F | G | H | K | L | M | N | O | P | |
| 1 | 0 | 0 | 0 | 0 | 0 | 0 | 0 | 0 | 0 | 0 | On | Off | Off | Off | Off | Off | Off | Off | Off | Off | Off | C | 0 | 0 | 0 | 0 | 0 | 0 | 0 | 0 | 0 | 0 |
| 0 | 1 | 0 | 0 | 0 | 0 | 0 | 0 | 0 | 0 | 0 | Off | On | Off | Off | Off | Off | Off | Off | Off | Off | Off | 0 | C | 0 | 0 | 0 | 0 | 0 | 0 | 0 | 0 | 0 |
| 0 | 0 | 1 | 0 | 0 | 0 | 0 | 0 | 0 | 0 | 0 | Off | Off | On | Off | Off | Off | Off | Off | Off | Off | Off | 0 | 0 | C | 0 | 0 | 0 | 0 | 0 | 0 | 0 | 0 |
| 0 | 0 | 0 | 1 | 0 | 0 | 0 | 0 | 0 | 0 | 0 | Off | Off | Off | On | Off | Off | Off | Off | Off | Off | Off | 0 | 0 | 0 | C | 0 | 0 | 0 | 0 | 0 | 0 | 0 |
| 0 | 0 | 0 | 0 | 1 | 0 | 0 | 0 | 0 | 0 | 0 | Off | Off | Off | Off | On | Off | Off | Off | Off | Off | Off | 0 | 0 | 0 | 0 | C | 0 | 0 | 0 | 0 | 0 | 0 |
| 0 | 0 | 0 | 0 | 0 | 1 | 0 | 0 | 0 | 0 | 0 | Off | Off | Off | Off | Off | On | Off | Off | Off | Off | Off | 0 | 0 | 0 | 0 | 0 | C | 0 | 0 | 0 | 0 | 0 |
| 0 | 0 | 0 | 0 | 0 | 0 | 1 | 0 | 0 | 0 | 0 | Off | Off | Off | Off | Off | Off | On | Off | Off | Off | Off | 0 | 0 | 0 | 0 | 0 | C | 0 | 0 | 0 | 0 | 0 |
| 0 | 0 | 0 | 0 | 0 | 0 | 0 | 1 | 0 | 0 | 0 | Off | Off | Off | Off | Off | Off | Off | On | Off | Off | Off | 0 | 0 | 0 | 0 | 0 | 0 | C | 0 | 0 | 0 | 0 |
| 0 | 0 | 0 | 0 | 0 | 0 | 0 | 0 | 1 | 0 | 0 | Off | Off | Off | Off | Off | Off | Off | Off | On | Off | Off | 0 | 0 | 0 | 0 | 0 | 0 | 0 | C | 0 | 0 | 0 |
| 0 | 0 | 0 | 0 | 0 | 0 | 0 | 0 | 0 | 1 | 0 | Off | Off | Off | Off | Off | Off | Off | Off | Off | On | Off | 0 | 0 | 0 | 0 | 0 | 0 | 0 | 0 | C | 0 | 0 |
| 0 | 0 | 0 | 0 | 0 | 0 | 0 | 0 | 0 | 0 | 1 | Off | Off | Off | Off | Off | Off | Off | Off | Off | Off | On | 0 | 0 | 0 | 0 | 0 | 0 | 0 | 0 | 0 | C | 0 |

TRUTH TABLE Latching
CCT-59SX0C-TD

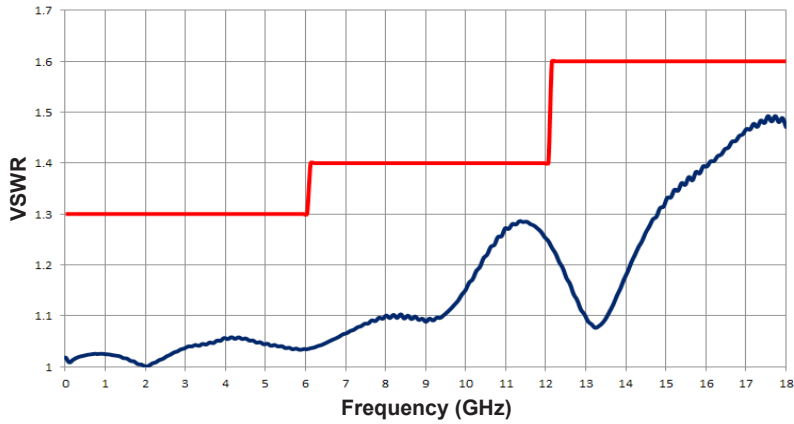
| Logic Input | | | | RF Path | | | | | | | | | | | Indicator Switches | | | | | | | | | | | | |
|-------------|---|---|---|----------|-----|-----|-----|-----|-----|-----|-----|-----|-------|-------|--------------------|---|---|---|---|---|---|---|---|---|---|---|---|
| 1 | 2 | 3 | 4 | J1 | J2 | J3 | J4 | J5 | J6 | J7 | J8 | J9 | J10 | Reset | E | F | G | H | K | L | M | N | O | P | | | |
| 0 | 0 | 0 | 0 | On | Off | Off | Off | Off | Off | Off | Off | Off | Off | Off | C | 0 | 0 | 0 | 0 | 0 | 0 | 0 | 0 | 0 | | | |
| 1 | 0 | 0 | 0 | Off | On | Off | Off | Off | Off | Off | Off | Off | Off | Off | 0 | C | 0 | 0 | 0 | 0 | 0 | 0 | 0 | 0 | | | |
| 0 | 1 | 0 | 0 | Off | Off | On | Off | Off | Off | Off | Off | Off | Off | Off | 0 | 0 | C | 0 | 0 | 0 | 0 | 0 | 0 | 0 | | | |
| 1 | 1 | 0 | 0 | Off | Off | Off | On | Off | Off | Off | Off | Off | Off | Off | 0 | 0 | 0 | C | 0 | 0 | 0 | 0 | 0 | 0 | | | |
| 0 | 0 | 1 | 0 | Off | Off | Off | Off | On | Off | Off | Off | Off | Off | Off | 0 | 0 | 0 | 0 | C | 0 | 0 | 0 | 0 | 0 | | | |
| 1 | 0 | 1 | 0 | Off | Off | Off | Off | Off | On | Off | Off | Off | Off | Off | 0 | 0 | 0 | 0 | 0 | C | 0 | 0 | 0 | 0 | | | |
| 0 | 1 | 1 | 0 | Off | Off | Off | Off | Off | Off | On | Off | Off | Off | Off | 0 | 0 | 0 | 0 | 0 | 0 | C | 0 | 0 | 0 | | | |
| 0 | 0 | 0 | 1 | Off | Off | Off | Off | Off | Off | Off | On | Off | Off | Off | 0 | 0 | 0 | 0 | 0 | 0 | 0 | C | 0 | 0 | | | |
| 1 | 0 | 0 | 1 | Off | Off | Off | Off | Off | Off | Off | Off | On | Off | Off | 0 | 0 | 0 | 0 | 0 | 0 | 0 | 0 | C | 0 | | | |
| 0 | 1 | 0 | 1 | Off | Off | Off | Off | Off | Off | Off | Off | Off | Reset | Off | 0 | 0 | 0 | 0 | 0 | 0 | 0 | 0 | 0 | 0 | | | |
| 1 | 1 | 1 | 1 | COIL OFF | | | | | | | | | | | 0 | 0 | 0 | 0 | 0 | 0 | 0 | 0 | 0 | 0 | 0 | 0 | 0 |

TYPICAL RF PERFORMANCE CURVES

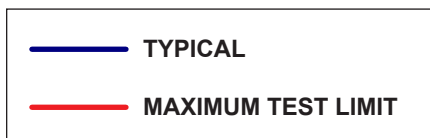
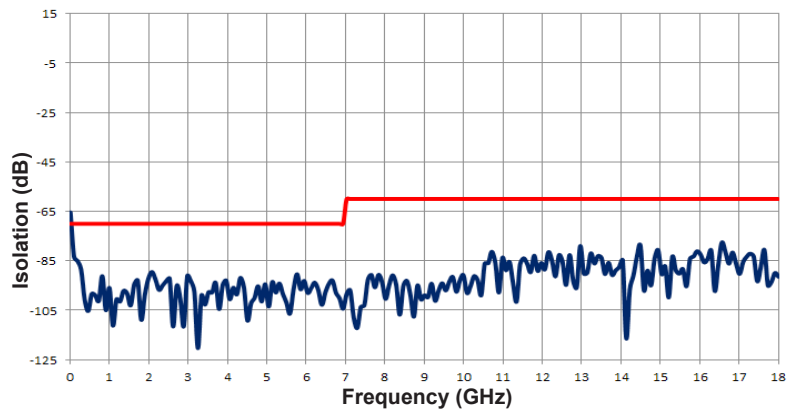
Insertion Loss (DC-18GHz)



VSWR (DC-18GHz)

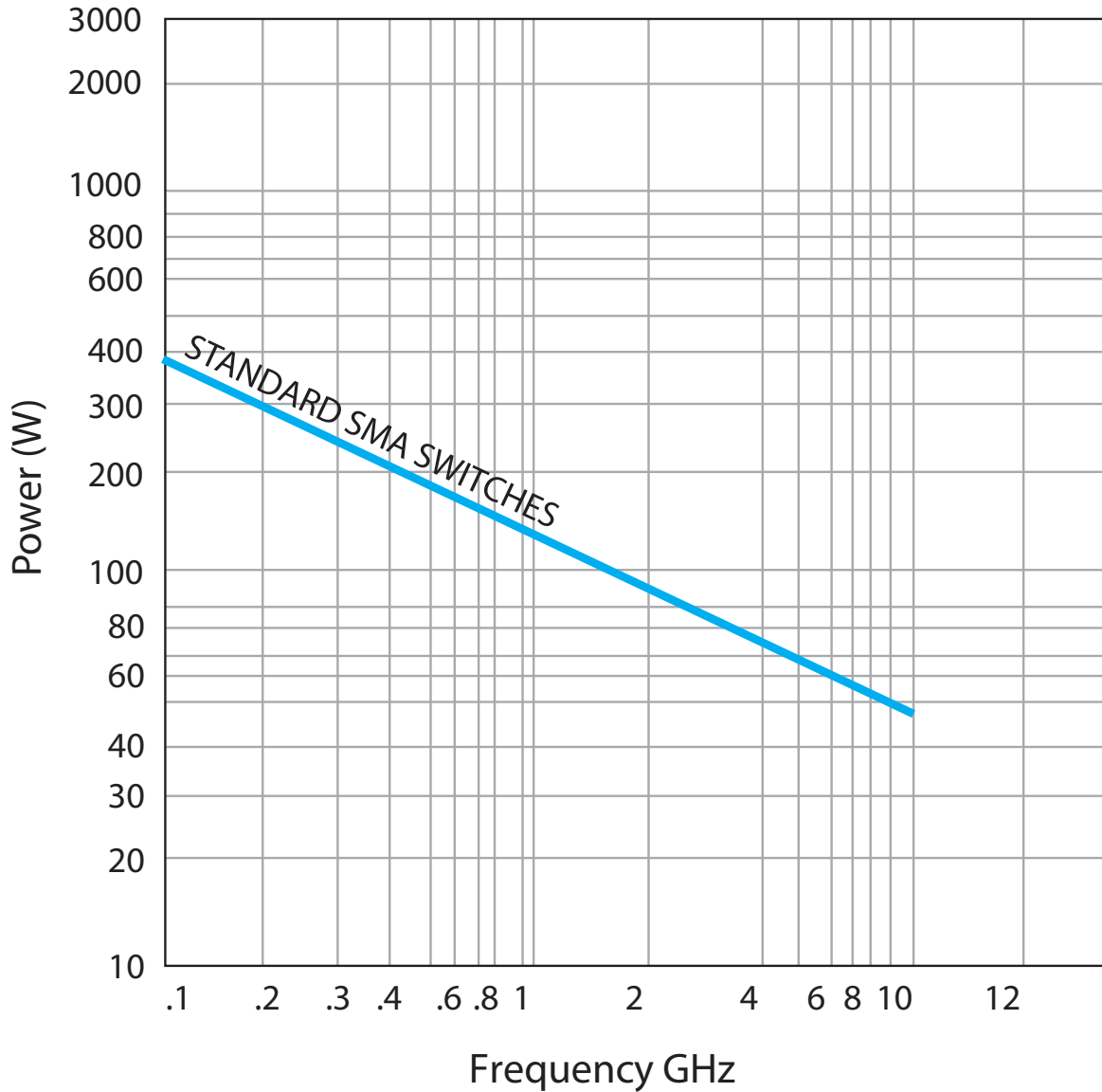


Isolation (DC-18GHz)



TYPICAL POWER PERFORMANCE CURVE

Power Handling vs. Frequency



Estimates based on the following reference conditions:

- Ambient temperature of 40°C or less
- Sea level operation
- Load VSWR of 1.20:1 maximum
- No high-power (hot) switching

Please contact Teledyne Coax Switches for derating factors when applications do not meet the foregoing reference conditions.

GLOSSARY

Actuator

An actuator is the electromechanical mechanism that transfers the RF contacts from one position to another upon DC command.

Arc Suppression Diode

A diode is connected in parallel with the coil. This diode limits the “reverse EMF spike” generated when the coil de-energizes to 0.7 volts. The diode cathode is connected to the positive side of the coil and the anode is connected to the negative side.

Date Code

All switches are marked with either a unique serial number or a date code. Date codes are in accordance with MIL-STD-1285 Paragraph 5.2.5 and consist of four digits. The first two digits define the year and the last two digits define the week of the year (YYWW). Thus, 1032 identifies switches that passed through final inspection during the 32nd week of 2010.

Indicator

Indicators tell the system which position the switch is in. Other names for indicators are telemetry contacts or tellback circuit. Indicators are usually a set of internally mounted DC contacts linked to the actuator. They can be wired to digital input lines, status lights, or interlocks. Unless otherwise specified, the maximum indicator contact rating is 30 Vdc, 50 mA, or 1.5 Watts into a resistive load.

Isolation

Isolation is the measure of the power level at the output connector of an unconnected RF channel as referenced to the power at the input connector. It is specified in dB below the input power level.

Multi-Throw Latching Switch

A multi-throw switch is a switch with one input and three or more output ports. The CCR-39 can switch a microwave signal to any of 10 outputs from a single common input.

Switching Time

Switching time is the total interval beginning with the arrival of the leading edge of the command pulse at the switch DC input and ending with the completion of the switch transfer, including contact bounce. It consists of three parts: (1) inductive delay in the coil, (2) transfer time of the physical movement of the contacts, and (3) the bounce time of the RF contacts.

TTL Switch Driver Option

As a special option, switch drivers can be provided for both failsafe and latching switches, which are compatible with industry-standard low-power Schottky TTL circuits.

TD-Option

This option includes a decoder. The 3-bit parallel command is decoded to internally select the appropriate position. See the logic tables. The TD-Option increases the Vsw supply current demand by 50mA max at 28Vdc and +20°C.

Performance Parameters vs Frequency

Generally speaking, the RF performance of coaxial switches is frequency dependent. With increasing frequency, VSWR and insertion loss increase while isolation decreases. All data sheets specify these three parameters as “worst case” at the highest operating frequency. If the switch is to be used over a narrow frequency band, better performance can be achieved.

Actuator Current vs Temperature

The resistance of the actuator coil varies as a function of temperature. There is an inverse relationship between the operating temperature of the switch and the actuator drive current. For switches operating at 28 VDC, the approximate actuator drive current at temperature, T, can be calculated using the equation:

$$I_T = \frac{I_A}{[1 + .00385 (T-20)]}$$

Where:

I_T = Actuator current at temperature, T

I_A = Room temperature actuator current – see data sheet

T = Temperature of interest in °C

Magnetic Sensitivity

An electro-mechanical switch can be sensitive to ferrous materials and external magnetic fields. Neighboring ferrous materials should be permitted no closer than 0.5 inches and adjacent external magnetic fields should be limited to a flux density of less than 5 Gauss.

SPECIAL FEATURE

Switching High-Power or Highly Sensitive Signals

Ensure the most linear response with the best galvanically matched contact system in the industry. Extremely low passive intermodulation is standard on all of our switches.

| Carrier Frequency 1 | Carrier Frequency 2 | PIM 3rd Order Frequency | PIM 5th Order Frequency |
|---------------------|---------------------|-------------------------|-------------------------|
| 870 MHz | 893 MHz | 847 MHz | 824 MHz |

| | 3rd Order Intermodulation | 5th Order Intermodulation |
|--------------------|---------------------------|---------------------------|
| Multiple Positions | -96 dBm | -115 dBm |
| | -139 dBc | -158 dBc |

Series CCT-59S

Multi-Throw DC-18 GHz, SP9T & SP10T
Latching Coaxial Switch, Internal 50Ω Termination



LATCHING CCT-59S PART NUMBER LIST

| | PART No. | | PART No. | | PART No. | | PART No. |
|----|-----------------|----|-----------------|-----|-----------------|-----|-----------------|
| 1 | CCT-59SX9C | 43 | CCT-59SX90-TMS | 85 | CCT-59SX0C-MS | 127 | CCT-59SX0D-RS |
| 2 | CCT-59SX9C-D | 44 | CCT-59SX90-TS | 86 | CCT-59SX0C-R | 128 | CCT-59SX0D-S |
| 3 | CCT-59SX9C-DM | 45 | CCT-59SX9D | 87 | CCT-59SX0C-RM | 129 | CCT-59SX0D-T |
| 4 | CCT-59SX9C-DR | 46 | CCT-59SX9D-M | 88 | CCT-59SX0C-RMS | 130 | CCT-59SX0D-TD |
| 5 | CCT-59SX9C-DRM | 47 | CCT-59SX9D-MS | 89 | CCT-59SX0C-RS | 131 | CCT-59SX0D-TDM |
| 6 | CCT-59SX9C-DRS | 48 | CCT-59SX9D-R | 90 | CCT-59SX0C-S | 132 | CCT-59SX0D-TDMS |
| 7 | CCT-59SX9C-DS | 49 | CCT-59SX9D-RM | 91 | CCT-59SX0C-T | 133 | CCT-59SX0D-TDS |
| 8 | CCT-59SX9C-M | 50 | CCT-59SX9D-RMS | 92 | CCT-59SX0C-TD | 134 | CCT-59SX0D-TM |
| 9 | CCT-59SX9C-MS | 51 | CCT-59SX9D-RS | 93 | CCT-59SX0C-TDM | 135 | CCT-59SX0D-TMS |
| 10 | CCT-59SX9C-R | 52 | CCT-59SX9D-S | 94 | CCT-59SX0C-TDMS | 136 | CCT-59SX0D-TS |
| 11 | CCT-59SX9C-RM | 53 | CCT-59SX9D-T | 95 | CCT-59SX0C-TDS | 137 | CCT-59SX0E |
| 12 | CCT-59SX9C-RMS | 54 | CCT-59SX9D-TD | 96 | CCT-59SX0C-TM | 138 | CCT-59SX0E-M |
| 13 | CCT-59SX9C-RS | 55 | CCT-59SX9D-TDM | 97 | CCT-59SX0C-TMS | 139 | CCT-59SX0E-MS |
| 14 | CCT-59SX9C-S | 56 | CCT-59SX9D-TDMS | 98 | CCT-59SX0C-TS | 140 | CCT-59SX0E-R |
| 15 | CCT-59SX9C-T | 57 | CCT-59SX9D-TDS | 99 | CCT-59SX00 | 141 | CCT-59SX0E-RM |
| 16 | CCT-59SX9C-TD | 58 | CCT-59SX9D-TM | 100 | CCT-59SX00-D | 142 | CCT-59SX0E-RMS |
| 17 | CCT-59SX9C-TDM | 39 | CCT-59SX9D-TMS | 101 | CCT-59SX00-DM | 143 | CCT-59SX0E-RS |
| 18 | CCT-59SX9C-TDMS | 60 | CCT-59SX9D-TS | 102 | CCT-59SX00-DR | 144 | CCT-59SX0E-S |
| 19 | CCT-59SX9C-TDS | 61 | CCT-59SX9E | 103 | CCT-59SX00-DRM | 145 | CCT-59SX0E-T |
| 20 | CCT-59SX9C-TM | 62 | CCT-59SX9E-M | 104 | CCT-59SX00-DRS | 146 | CCT-59SX0E-TD |
| 21 | CCT-59SX9C-TMS | 63 | CCT-59SX9E-MS | 105 | CCT-59SX00-DS | 147 | CCT-59SX0E-TDM |
| 22 | CCT-59SX9C-TS | 64 | CCT-59SX9E-R | 106 | CCT-59SX00-M | 148 | CCT-59SX0E-TDMS |
| 23 | CCT-59SX90 | 65 | CCT-59SX9E-RM | 107 | CCT-59SX00-MS | 149 | CCT-59SX0E-TDS |
| 24 | CCT-59SX90-D | 66 | CCT-59SX9E-RMS | 108 | CCT-59SX00-R | 150 | CCT-59SX0E-TM |
| 25 | CCT-59SX90-DM | 67 | CCT-59SX9E-RS | 109 | CCT-59SX00-RM | 151 | CCT-59SX0E-TMS |
| 26 | CCT-59SX90-DR | 68 | CCT-59SX9E-S | 110 | CCT-59SX00-RMS | 152 | CCT-59SX0E-TS |
| 27 | CCT-59SX90-DRM | 69 | CCT-59SX9E-T | 111 | CCT-59SX00-RS | | |
| 28 | CCT-59SX90-DRS | 70 | CCT-59SX9E-TD | 112 | CCT-59SX00-S | | |
| 29 | CCT-59SX90-DS | 71 | CCT-59SX9E-TDM | 113 | CCT-59SX00-T | | |
| 30 | CCT-59SX90-M | 72 | CCT-59SX9E-TDMS | 114 | CCT-59SX00-TD | | |
| 31 | CCT-59SX90-MS | 73 | CCT-59SX9E-TDS | 115 | CCT-59SX00-TDM | | |
| 32 | CCT-59SX90-R | 74 | CCT-59SX9E-TM | 116 | CCT-59SX00-TDMS | | |
| 33 | CCT-59SX90-RM | 75 | CCT-59SX9E-TMS | 117 | CCT-59SX00-TDS | | |
| 34 | CCT-59SX90-RMS | 76 | CCT-59SX9E-TS | 118 | CCT-59SX00-TM | | |
| 35 | CCT-59SX90-RS | 77 | CCT-59SX0C | 119 | CCT-59SX00-TMS | | |
| 36 | CCT-59SX90-S | 78 | CCT-59SX0C-D | 120 | CCT-59SX00-TS | | |
| 37 | CCT-59SX90-T | 79 | CCT-59SX0C-DM | 121 | CCT-59SX0D | | |
| 38 | CCT-59SX90-TD | 80 | CCT-59SX0C-DR | 122 | CCT-59SX0D-M | | |
| 39 | CCT-59SX90-TDM | 81 | CCT-59SX0C-DRM | 123 | CCT-59SX0D-MS | | |
| 40 | CCT-59SX90-TDMS | 82 | CCT-59SX0C-DRS | 124 | CCT-59SX0D-R | | |
| 41 | CCT-59SX90-TDS | 83 | CCT-59SX0C-DS | 125 | CCT-59SX0D-RM | | |
| 42 | CCT-59SX90-TM | 84 | CCT-59SX0C-M | 126 | CCT-59SX0D-RMS | | |

* X = 6 (28Vdc), 7 (15Vdc), 8 (12Vdc) and 9 (24Vdc)